
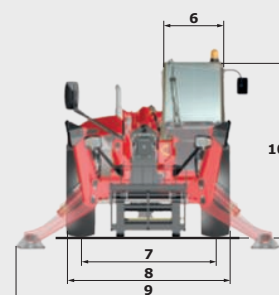
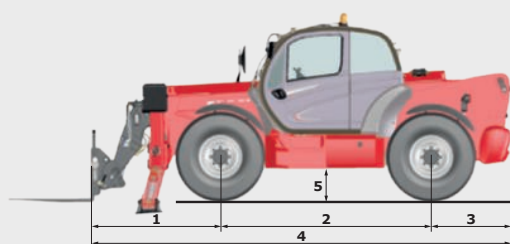
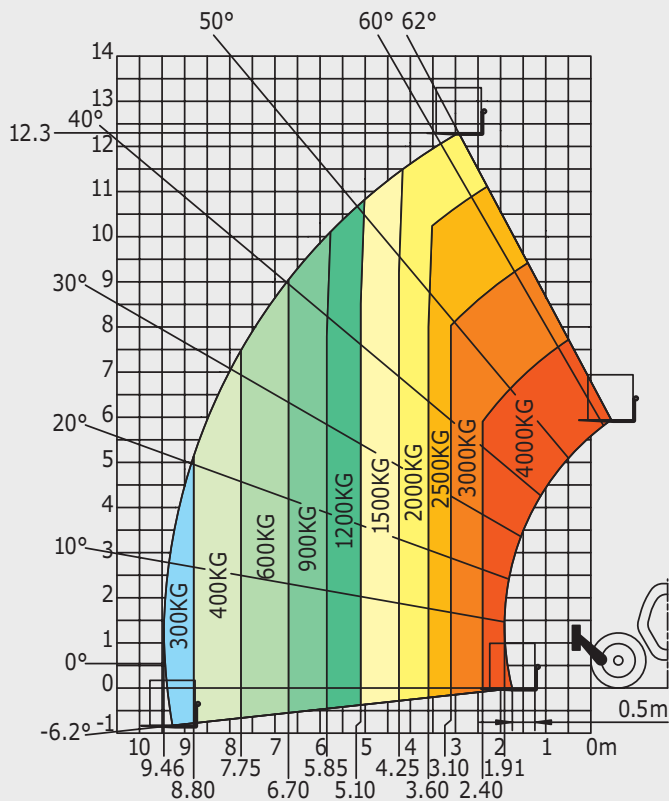


	MT 1440		MT 1440 A		MT 1440 H		MT 1440 HA	
<b>Lifting</b>								
Max. capacity					4000 kg			
Max. lifting height					13.53 m			
Max. outreach					9.46 m			
Break-out force with bucket					7400 daN			
<b>Unladen time</b>								
Lifting	15.5 secs		15.7 secs		15.5 secs		15.7 secs	
Lowering	11.6 secs		13.3 secs		11.6 secs		13.3 secs	
Extension	16.5 secs		19.2 secs		16.5 secs		19.2 secs	
Retraction	11.9 secs		14.8 secs		11.9 secs		14.8 secs	
Crowd					4 secs			
Dump					4 secs			
<b>Tyres</b>					400/80-24			
<b>Braking</b>								
Service brake					oil immersed multi-disc braking on front/rear axles			
Parking brake					automatic negative handbrake			
<b>Engine</b>								
					PERKINS - STAGE 3B			
Type					854E-E34TA			
Cubic capacity					3400 cm³			
Power					102 HP/75 kW			
Max. torque					420 Nm - 1400 rpm			
Injection					direct			
Cooling					water			
Laden drawbar pull			10700 daN				8000 daN	
			torque converter 4 wheel drive				hydrostatic 4 wheel drive	
<b>Transmission</b>								
Reversing shift					electrohydraulic control			
Number of gears (forward/reverse)			4/4				3/3	
Max. travel speed (may vary according to applicable regulations)					25 kph or 35 kph			
Steering mode					4 wheel steer - 3 steering modes			
								
<b>Controls</b>								
					JSM® Joystick multi - function load limiter cut off system - EN15000 norm			
<b>Hydraulics</b>								
Pump					gear type with flow splitter - 170 l/min - 270 bar			
<b>Capacities</b>								
Hydraulic oil					135 l			
Fuel					140 l			
<b>Unladen weight</b> (with forks)	10900 kg		11600 kg		10900 kg		11600 kg	
<b>Dimensions</b>								
<b>1.</b> Front wheel centre to carriage					1.90 m			
<b>2.</b> Wheelbase					3.07 m			
<b>3.</b> Rear wheel centre to rear face					1.16 m			
<b>4.</b> Overall length to carriage					6.13 m			
<b>5.</b> Ground clearance					0.37 m			
<b>6.</b> Overall width of cab					0.89 m			
<b>7.</b> Inside tyre width					1.96 m			
<b>8.</b> Overall width					2.37 m			
<b>9.</b> Overall width (stabilizers lowered)					3.79 m			
<b>10.</b> Overall height					2.45 m			
Standard forks (length x width x thickness)					1200 x 125 x 50 mm			
Turning radius (over tyres)					3.97 m			
Frame levelling					+/- 9°			
Carriage rotation (crowd/dump)					12°/114°			
<b>Noise and vibration</b>								
Noise at driving position (LpA)					82 dB			
Environmental noise (LwA)					106 dB			
Vibration to whole hand/arm					<2.5 m/s²			

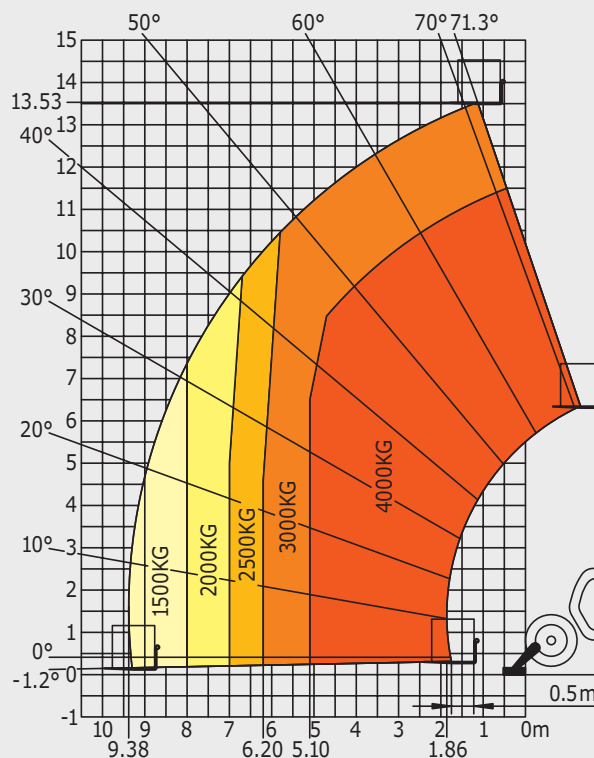


## Rough terrain load chart standard EN1459 B

Machine on tyres with forks



Machine on stabilizers with forks



Machine on stabilizers with platform  
(MT 1440 A and MT 1440 HA versions)

